

**HOWARDIAN HILLS
AREA OF OUTSTANDING NATURAL BEAUTY
JOINT ADVISORY COMMITTEE
1 APRIL 2010**

STRATEGIC ENVIRONMENTAL ASSESSMENT MONITORING STATISTICS

1.0 PURPOSE OF REPORT

- 1.1 To receive details of the information gathered as part of the monitoring process for the Strategic Environmental Assessment carried out on the AONB Management Plan.

2.0 BACKGROUND

- 2.1 The European Directive 2001/42/EC¹ “on the assessment of the effects of certain plans and programmes on the environment” (the SEA Directive) requires member states to ensure that Strategic Environmental Assessments are carried out for plans and programmes. The SEA Directive has been implemented in England through the Environmental Assessment of Plans and Programmes Regulations 2004. The SEA process was applied to the Howardian Hills AONB Management Plan 2009-2014 aiming to protect the environment and promote sustainability.
- 2.2 The SEA process has several stages:
- Stage A – Setting the context
 - Stage B – Develop alternatives
 - Stage C – Environmental Report
 - Stage D – Consultation
 - Stage E – Monitoring and implementing the plan
- 2.3 The SEA requires that monitoring of the AONB Management Plan 2009 – 2014 is undertaken. Objectives and indicators were established and were outlined in the SEA Environmental Report reflecting the key environmental issues identified during the development of the management plan. The indicators (Table 1) will be used to monitor the Management Plan and in turn will help to inform future plans and programmes within the Howardian Hills AONB.

3.0 RECOMMENDATION

That the report be received for information.

¹ <http://www.communities.gov.uk/publications/planningandbuilding/draftpracticalguide>

Table 1

Issues Identified by the AONB	Impacts on the following SEA Objectives* (<i>*Detailed in the Environmental Report</i>)	Indicators	Measurement 2009/10	Source
Landscape Management	Landscape, land cover, biodiversity	Number is SINC's ² under management within the AONB	33	NYCC
Woodland Management	Landscape, land cover, biodiversity, heritage, recreation/access, tourism, climate and communities	Area of the AONB ³ classed as woodland	3108 ha	NYCC/Forestry Commission/Woodland Trust
Agricultural Change	Landscape, land cover, biodiversity, heritage, recreation/access, tourism, climate and communities	Number of recorded agri-environment schemes	123	Defra Environment Agency
Energy Production and Use	Landscape, biodiversity, land use, climate and quality of life	Area of AONB with biomass crops	Willow = 7.53 ha Miscanthus = 27.36 ha Total = 34.89 ha	MAGIC/Natural England/NYCC
Development (Primarily housing and agricultural buildings)	Landscape, biodiversity, heritage, recreation/access, tourism, communities, climate and quality of life	Number of new houses and number of dwellings per area inside AONB and outside (by District)		AONB Ryedale DC Hambleton DC
		Number of new agricultural buildings		

² Number of SINC's within the Howardian Hills AONB = 73

³ Area of Howardian Hills AONB 20,350 ha

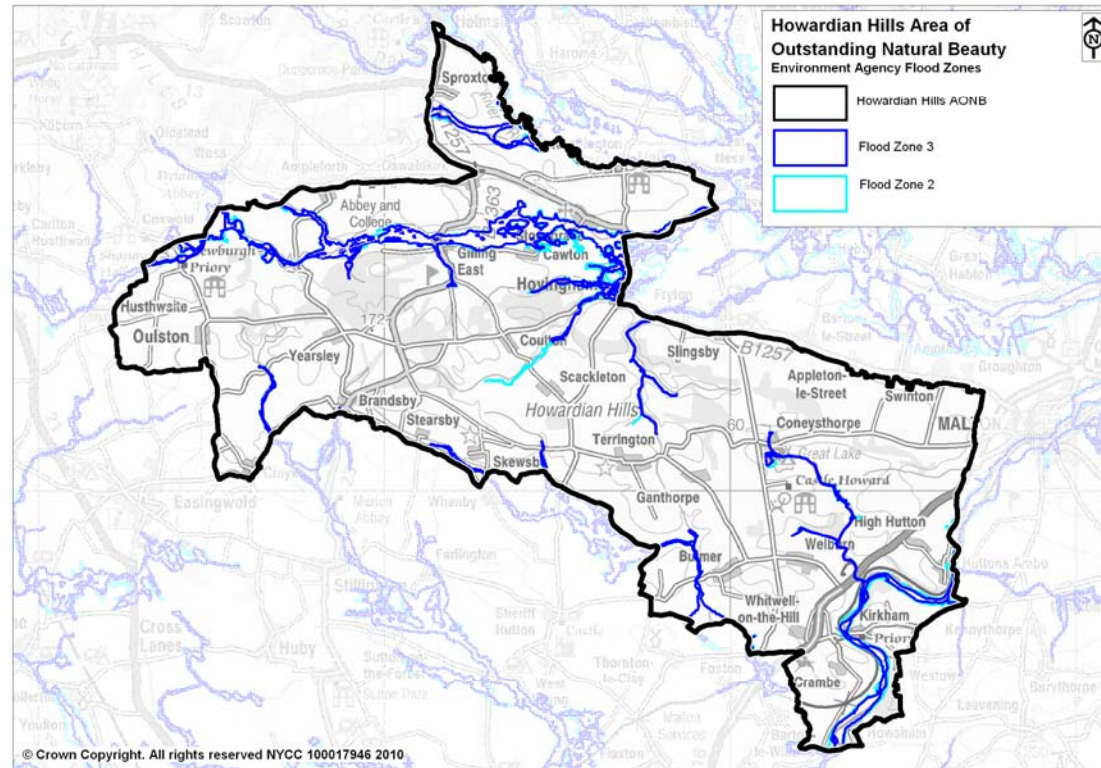
Issues Identified by the AONB	Impacts on the following SEA Objectives* (<i>*Detailed in the Environmental Report</i>)	Indicators	Measurement 2009/10	Source
Climate Change	Landscape, biodiversity, land use, water resources, communities and quality of life	Flood Zones Mapping within the AONB	Appendix 1	Environment Agency/AONB
		Number of localised flooding events		
		Number of localised drought events		
		Loss of key species from the AONB	To begin assessment Summer 2010	
Water Resources	Landscape, biodiversity, (heritage) land use, communities and quality of life	Water quality of rivers ⁴	(Results from 2008) River Derwent: 9 locations of measurement = Chemistry A, Biology A, Nitrates 3, Phosphates 1 1 location of measurement = Chemistry B, Biology A, Nitrates 4, Phosphates 2 River Rye: 9 locations of measurement = Chemistry A, Biology A, Nitrates 3, Phosphates 2 2 locations of measurement = Chemistry B, Biology B, Nitrates 1, Phosphates 2	Environment Agency

⁴ Environment Agency take water samples at regular intervals along rivers and canals and analyse their chemistry, biology, nitrate and phosphate content. Chemistry and biology – A to F (very good to bad); Nitrates and phosphates – 1 to 6 (very low levels to very high levels); **Note:** High levels of nutrients may occur naturally and are not necessarily bad for the environment

Issues Identified by the AONB	Impacts on the following SEA Objectives* (<i>*Detailed in the Environmental Report</i>)	Indicators	Measurement 2009/10	Source
Transport and Access	Landscape, biodiversity, land use, recreation/access. Communities, climate and quality of life	Villages and towns with daily bus service ⁵	Appendix 2	NYCC/AONB
		% of PROW network considered in good condition.		
		% PROW network issues being resolved		
Recreation Pressures	Landscape, biodiversity, heritage, land use, communities and quality of life, users	Number of vehicles in key car parks at set times/days	To begin collection Summer 2010	AONB/NYCC
		Numbers of people passing - count point on key routes (disturbance data from local research)	To begin collection Summer 2010	

⁵ <http://www.northyorkstravel.info/>

Appendix 1: Howardian Hills AONB Environment Agency Flood Zones⁶



⁶ Flood Zones are the way in which Government Planning Policy Guidance 25 on Development and Flood Risk (PPG 25) states that planner should look at the relative risk of flooding in different areas. PPG 25 identifies three different risk zones. Zone 1 – lowest probability of flooding; Zone 2 – medium probability of flooding and; Zone 3 – highest probability of flooding. PPG 25 states that Flood Zones should show where flood waters would go **if there were no flood defences.**

Appendix 2: Towns and Villages with Daily Bus Services

Town/Village	Number of Bus Routes ⁷	Number of Routes that are Seasonal	Town/Village	Number of Bus Routes	Number of Routes that are Seasonal
Amotherby	3		Huttons Ambo	0	
Ampleforth	2	1	Kirkham	0	
Appleton Le Street	1		Malton	10	
Barton Le Street	1		Muscoates	0	
Barton Le Willows	1		Nunnington	2	
Brandsby	1		Oswaldkirk	2	
Broughton	6	1	Oulston	1	
Bulmer	2		Scackleton	1	
Coulton	0		Skewsby	0	
Coxwold	4	1	Slingsby	2	1
Crambe	0		Sproxton	2	
Crayke	2		Stearsby	0	
Easingwold	7		Stonegrave	2	
East Ness	0		Swinton	3	
Farlington	0		Terrington	2	1
Foston	1		Wass	2	
Fryton	1		Welburn	2	
Gilling East	0		Whenby	0	
Harome	1		West Ness	0	
Helmsley	9	4	Westow	1	
High Hutton	1		Yearsley	0	
Hovingham	7	1			
Howsham	1				
Hustwaite	4				

⁷ Note: One Bus Route may have several Bus Services